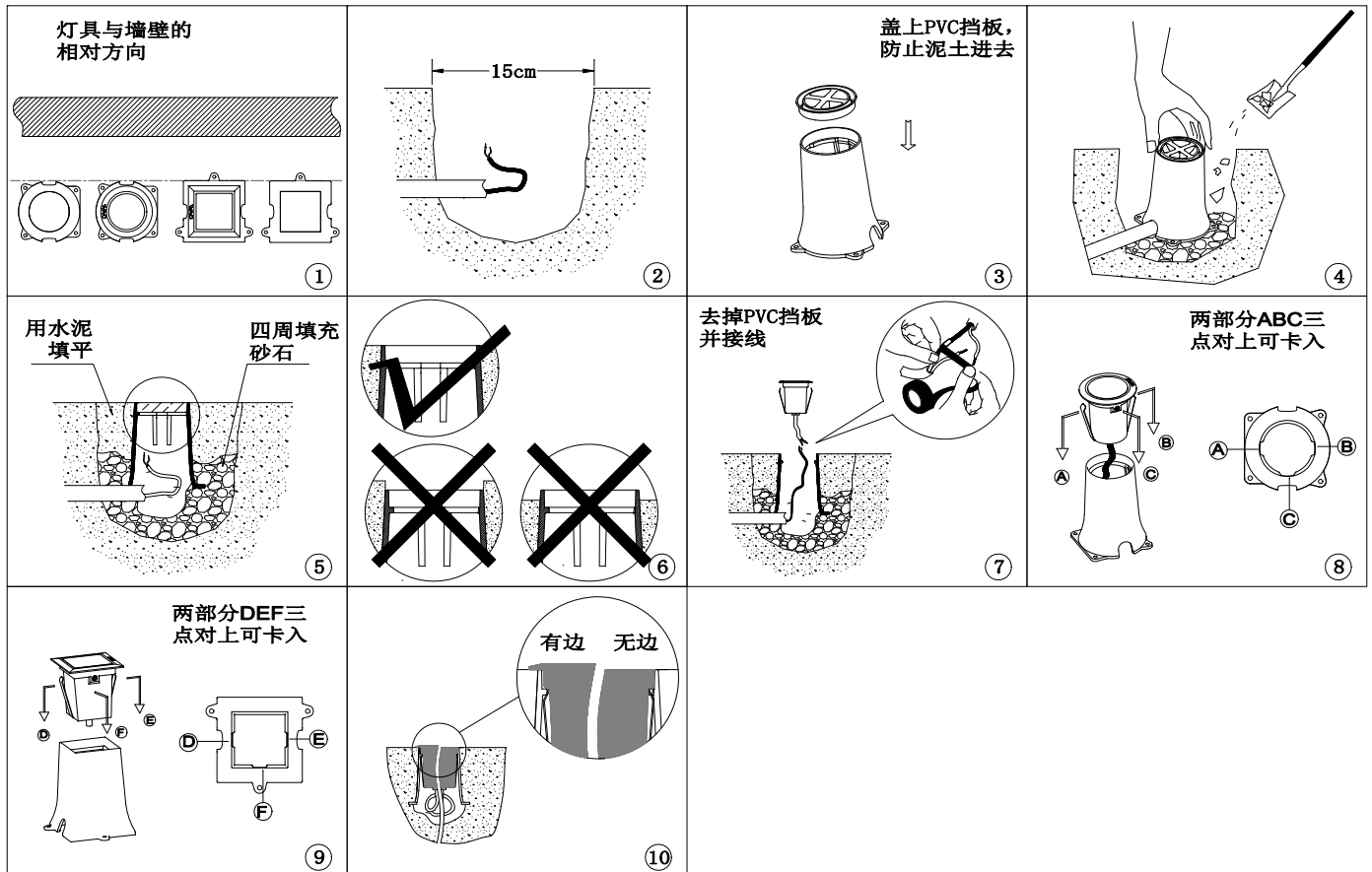


注意事项:

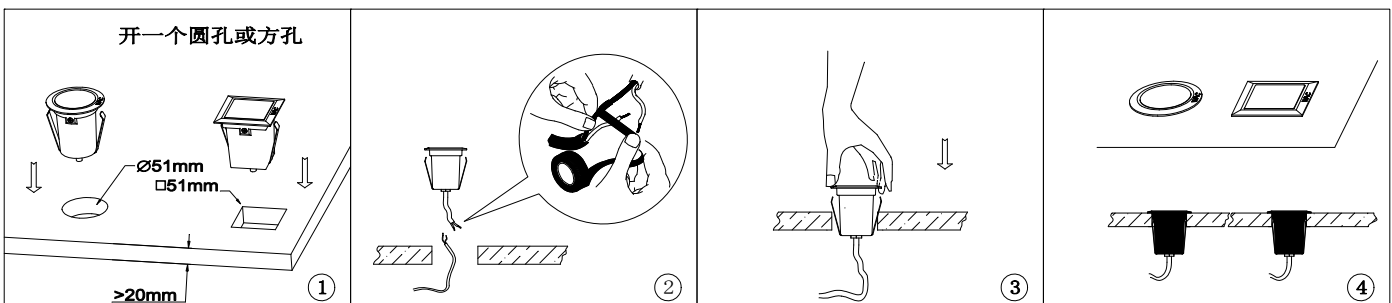
1. 安装前请仔细阅读说明书;
2. 请专业电工安装;
3. 为避免触电危险, 在安装、维护前请确认关闭电源;
4. 保留说明书, 以备使用参考。

安装步骤:

1、地面安装



2、嵌入式安装 (此安装方式不适合无边地埋灯)



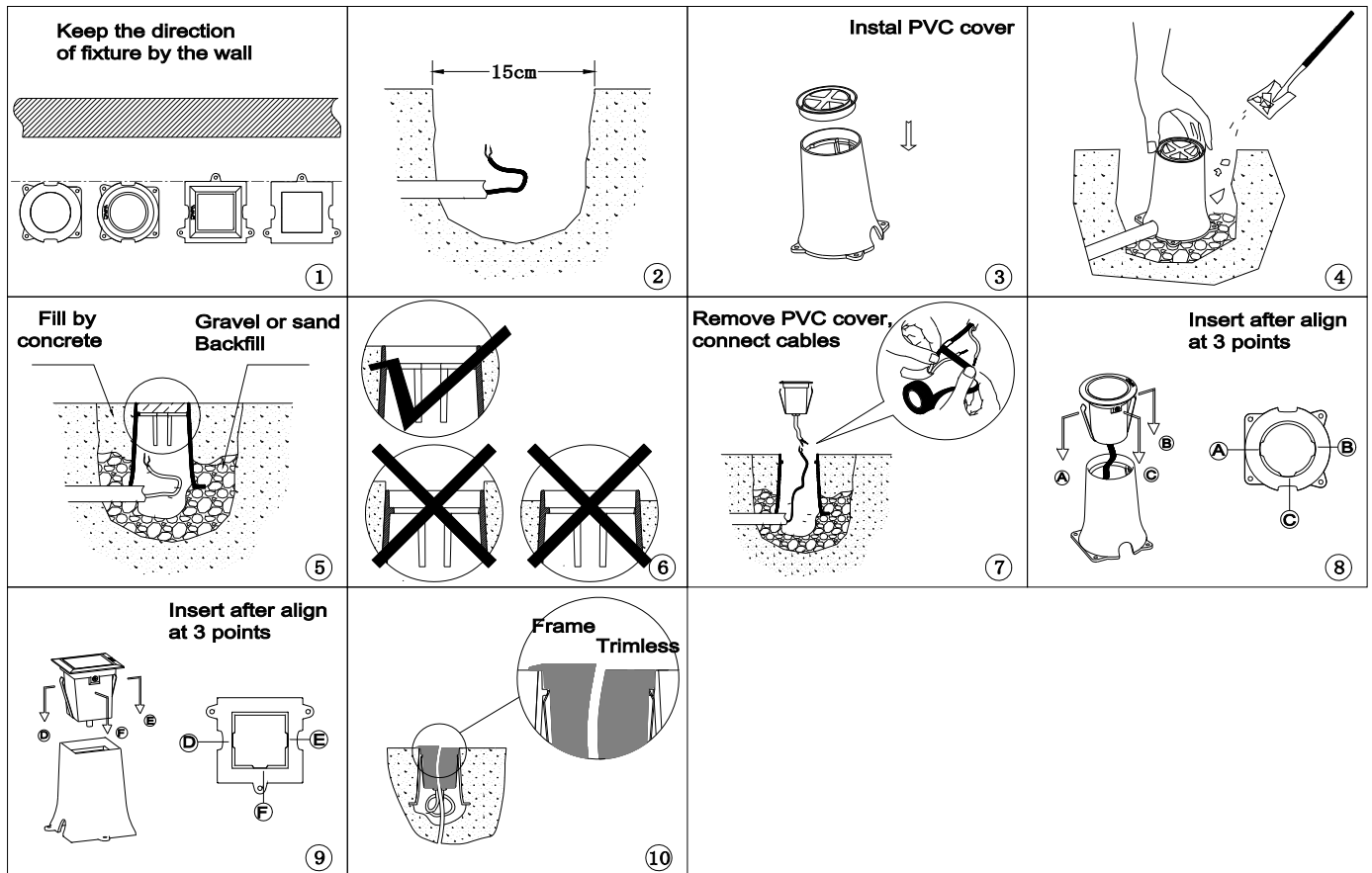
Safety Instructions:

To reduce the risk of fire, electrical shock and injuries to persons:

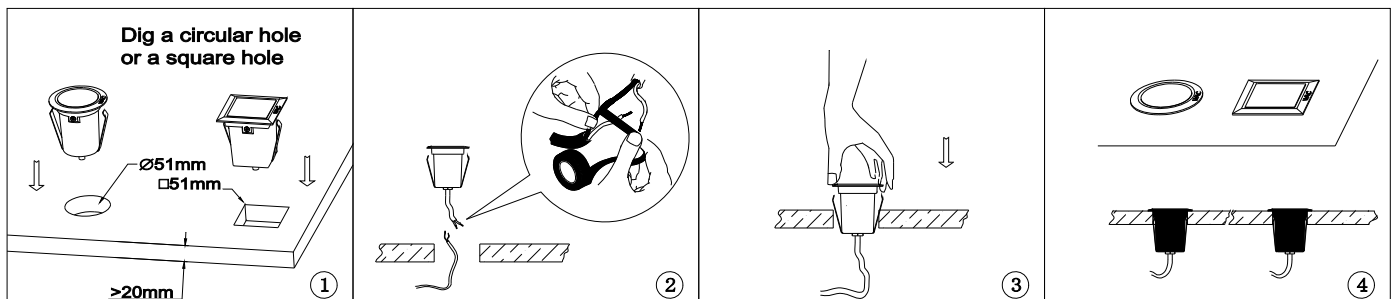
1. Read all instructions before installing.
2. Turn off power at main switch before installing or modifying the system.
3. A qualified electrician must install fixture only.
4. Retain instruction for future maintenance reference.

Mounting:

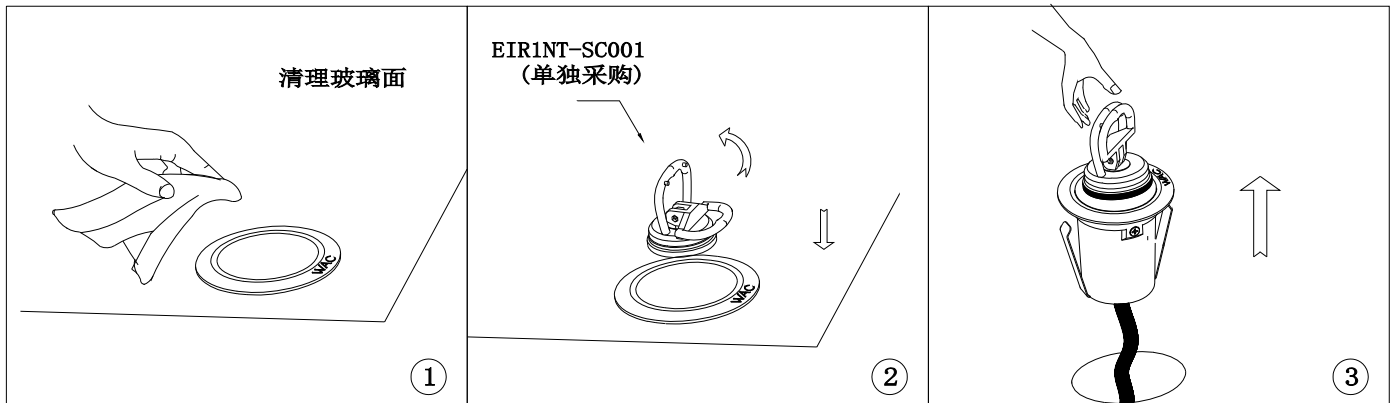
1. Concrete installation



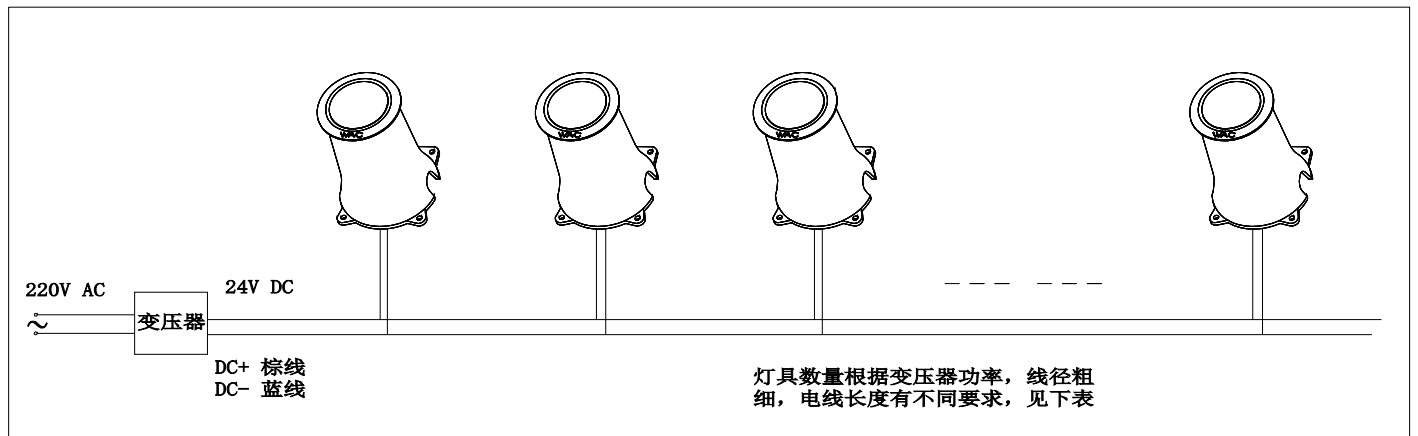
2. Recessed (Not suitable for the trimless fixture)



3、拆卸维修



4、接线说明：



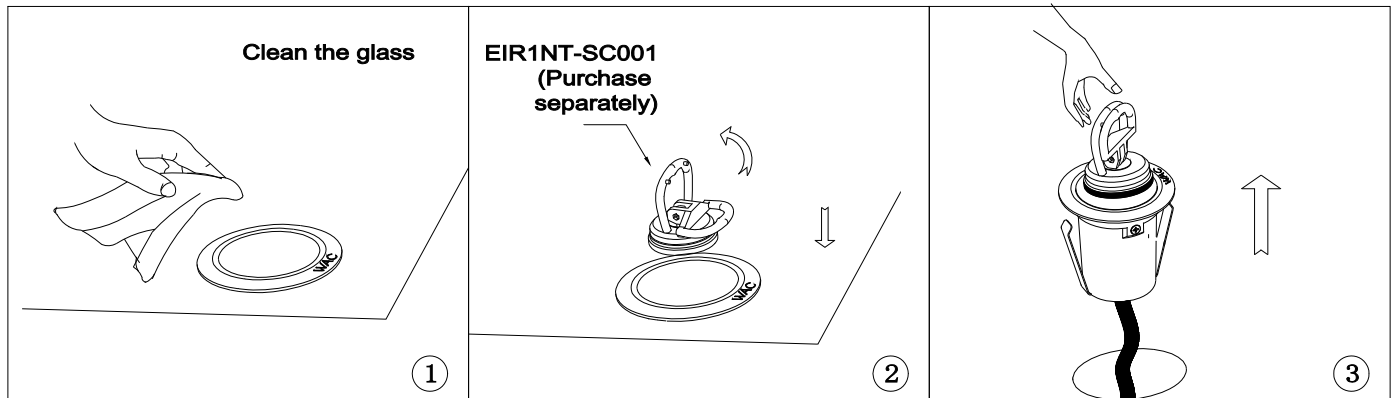
5、变压器、线径与灯具串接数量参考下表（灯具功率3.5W）：

序号	变压器功率(W)	线径(mm ²)	电线长度(m)	建议串接灯具数量(个)
1	100	1.0	50	20
2	100	1.0	40	22
3	100	1.0	30	24
4	100	1.0	20	26
5	100	1.0	10	28

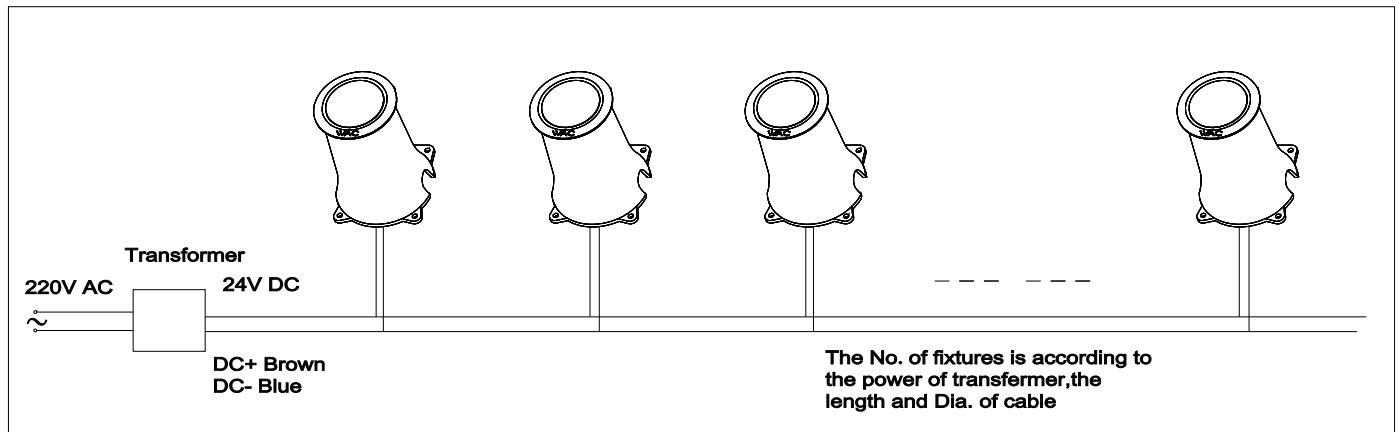
注：1、表格中变压器带载能力为100%，若带载能力下降则按比例调整；

2、表中灯具连接数量计算办法说明：如变压器功率变为200W，其他数据不变，灯具串接数量为40个。

3. Repair



4. Wiring



5. The relation of the fixtures' QTY., the transformer's power, the length and Dia. of cable show as below:

Serial No	Power of trans (W)	Dia. (mm ²)	Length (m)	The QTY of fixtures (PCS)
1	100	1.0	50	20
2	100	1.0	40	22
3	100	1.0	30	24
4	100	1.0	20	26
5	100	1.0	10	28

Note:

1. The transformer can full load at this sheet; the no. reduce according to the ability of transformer.
2. The calculation about the QTY of fixture: the 40pcs fixtures can connect on a cable on one of the conditions:
The power is up to 200W; the Dia. Is up to 2.0 mm².

WAC LIGHTING

"WAC" "Responsible Lighting" trademarks holder is WAC Lighting Co., Ltd which authorizes other firms to use trademarks.

China sale headquarter : WAC Lighting Technology (Shanghai) Co., Ltd.

Address : No. 14, Lane 299, Bi Sheng Road, Zhang Jiang, China (Shanghai) Pilot Free Trade Zone 201204

China factory : WAC Lighting (Dongguan) Co., Ltd.

Address : No.390, Qing Feng Road, Qing Xi Town, Dongguan City, Guangdong Province, China 523653